



# Using Convexity in the Management of Complex Clinical Challenges



Janet Hill CWOCN and Nancy Scott CWOCN

THE USE OF CONVEXITY IN CHALLENGING CLINICAL SITUATIONS REQUIRES VERSATILITY TO IMPROVE PATIENT OUTCOMES. USING CONVEX BARRIER RINGS ADDRESSES MANY OF THESE NEEDS IN MANAGING MULTIPLE COMPLEX PROBLEMS.

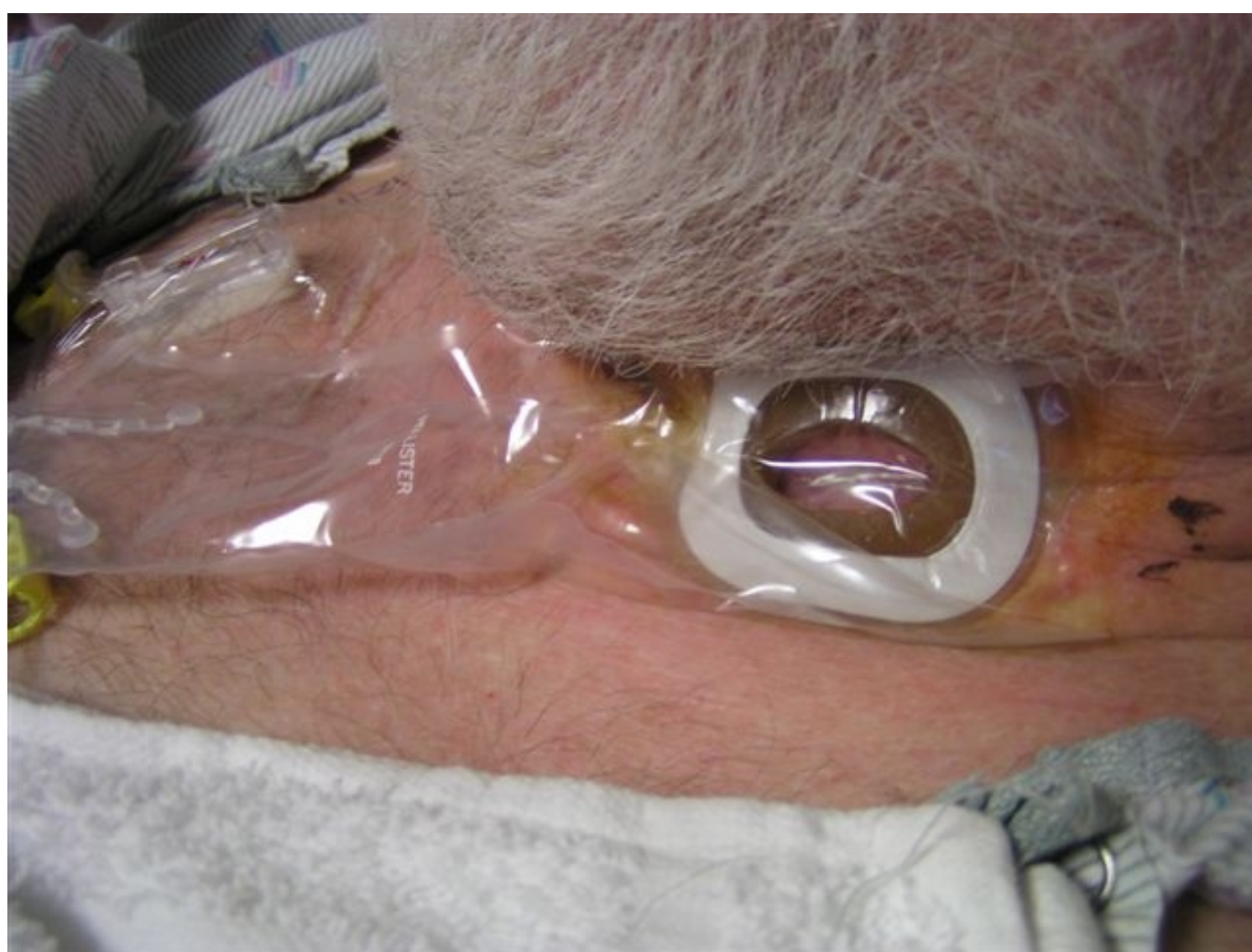
ESOPHAGEAL FISTULA



CONVEX RING STRETCHED TO OVAL SHAPE TO FIT OVER FISTULA



PEDI-POUCH OVER RING TO CONTAIN DRAINAGE



The convex ring molded well into the neck creases and was easily stretched into an oval shape. The system stayed intact for 5 days allowing the patient to take a po diet and prevented skin breakdown.

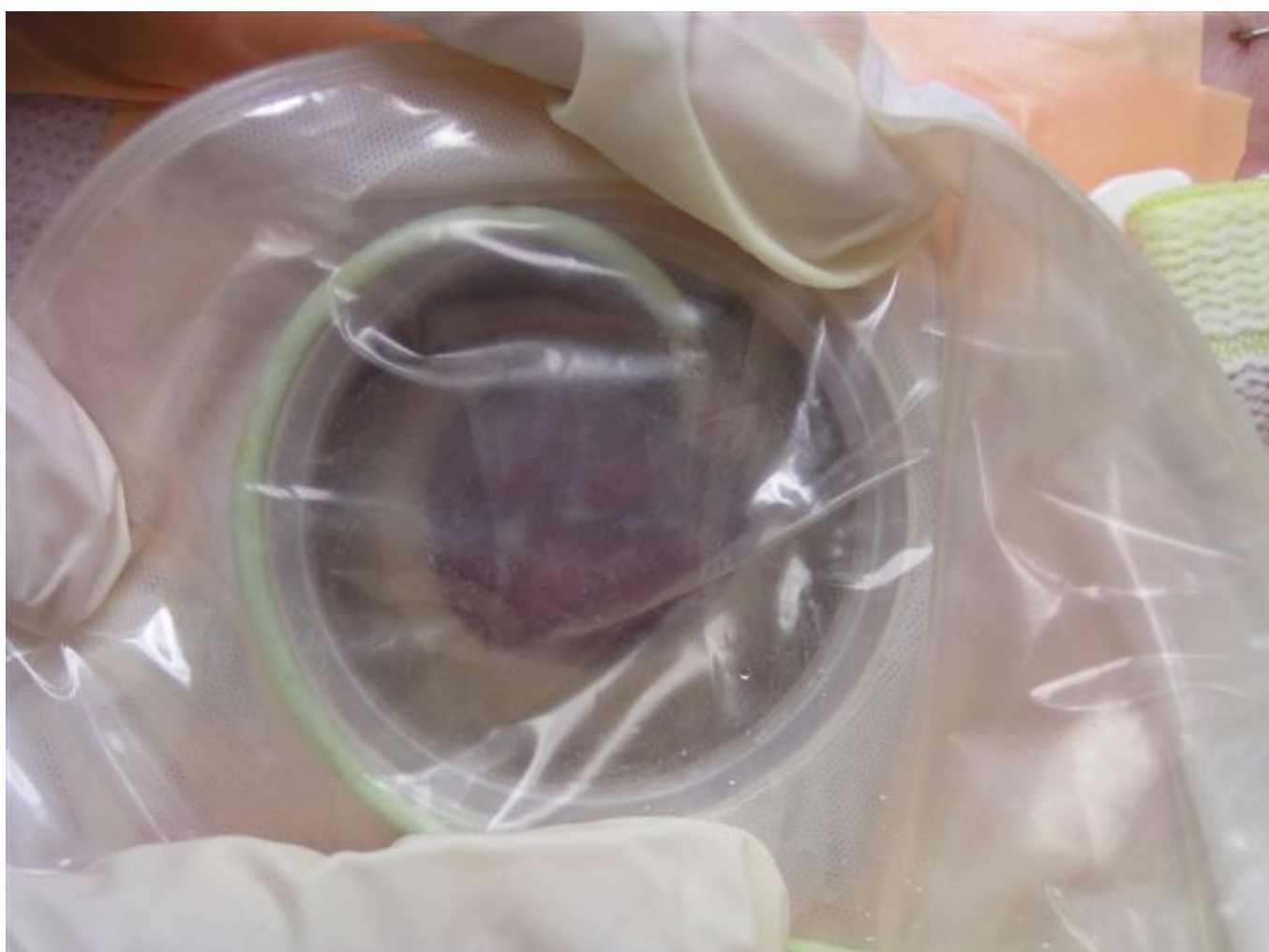
ILEAL CONDUIT IN DEEP ABDOMINAL FOLD – URINE LEAKING INTO INCISION



DEEP CONVEXITY CREATED WITH CONVEX RINGS



SITE POUCHED TO CONTAIN OUTPUT



Deep convexity was created using a convex wafer and a convex ring. Note the flat stoma within a deep abdominal fold with bilateral creases. The patient went from leaking 1 – 2 times daily to a 4 day wear time. This simplified the pouching of this complex problem allowing the family to perform independent self-care.

G-TUBE WITH ENLARGED LEAKING STOMA



CONVEX RING APPLIED TO BACK OF WAFER



APPLIANCE THEN APPLIED TO PROTECT SKIN



The convex ring proved to be durable and easy to use with other products. Gastric juices were contained thus preventing further skin excoriation. Staff was able to measure the amount of output and less pain medication was required as the skin healed.

OUTCOMES : THE INNOVATIVE USE OF CONVEX BARRIER RINGS PROVIDES SKIN PROTECTION, EASE OF USE, AND VERSATILITY. CONTAINMENT OF DRAINAGE WITH PATIENT COMFORT, OUTPUT MEASUREMENTS AND OPTIMIZING NURSING TIME WAS ACHIEVED.

\*Adapt Convex Barrier Rings, Hollister Incorporated